

2024 AUTUMN EDITION

TRACTOR TORQUE & MORE

We're behind you
100%



WAIKATO TRACTORS LTD



Massey Ferguson 35X Restoration



Fendt 940MT Debut in Pukekohe



Brand New Valtra on the Block

Plus New and Used Machinery Deals and more!

WELCOME

Hi all, welcome to our first newsletter release of The Waikato Tractor Torque Newsletter. We plan to release a new edition every quarter, aiming to give you an insight into what is happening in the world of Waikato Tractors and the wider Ag industry. Product specials and deals will also be included, so keep an eye out to secure these!

2024 seems to be flying by, and we hope everyone has had a good start to the year despite a challenging economic environment. We still see customers making the most of the cards that are being dealt which is positive. Although times have been tough, a good summer period has meant crop production seems to be above average resulting in a bumper crop for many farmers. This is helping to ease the pain a little across the board.

In the world of Waikato Tractors, we have been running lots of demonstration programs for the last six months, to showcase some new products and technology. There have been new releases across all our brands, including Massey Ferguson 8s, Valtra Q Series, and Fendt 700 Gen 7. We have successfully showcased these, and customers have all been impressed.

Talking about technology, AGCO has recently set up a joint venture with Trimble, acquiring an 85% share of the company, with the remainder being held in the new PTX Trimble company. They aim to become the industry leader in mixed fleet smart farming and autonomy solutions. There will be a consolidation of companies into PTX which will take place. Precision Planting, JCA Technologies, Bilberry, Muller Elektronik, and others will be under the PTX banner. What this looks like for the local New Zealand markets is still being worked through but is very exciting and demonstrates AGCO's ambitions towards becoming the market leader in this field. As we learn more, we will keep you updated.

We would like to thank you for your continued support and hope you enjoy our first quarterly newsletter. We will see you at National Fielddays be sure to come and say G'day.

Jared Drummond

Jared Drummond
Dealer Principal



FIELD DAYS



CENTRAL DISTRICTS - FIELD DAYS 2024.

Ag & Civil Direct Highlights Success at Waimumu and Central Districts Fielddays

Ag & Civil Direct, alongside Ag Attachments and Fieldmaster, recently attended two major agricultural expos: the Southern Waimumu Fielddays and the Central Districts Fielddays in the lower North Island. Showcasing a diverse array of products, including industry-leading Shelbourne, Bunning Manure Spreaders, Montefiori Blades, Mericrushers and Farming Equipment.

The Waimumu Fielddays, held from February 11th to 13th, had an impressive turnout, with an estimated 44,000 visitors passing through the gates over the three-day event. Situated near Gore, the exhibition enjoyed favourable weather conditions on its opening day, which facilitated numerous inquiries into Ag & Civil Direct's product range. The Shelbourne side discharge muck spreaders had particular interest among attendees. Despite encountering wet weather on the second day, local farmers remained committed to attend the show, demonstrating a strong commitment to engaging with the event. By the final day, the sunshine had returned, with positive interactions between both visitors and exhibitors. Additionally, the occasion was marked by a sentimental moment as the company farewelled Bruce Campbell, a respected individual in the industry, as he transitions into retirement.

The Central Districts Fielddays, hosted at Manfeild in Feilding, Manawatu from the 13th to 15th of March proved to be equally as successful. With over 500 sites and more than 30,000 visitors, the event showcased positivity and optimism within the primary sector despite economic challenges.

JOIN US!

**We will be at Site H16
We would love to see
you there!**

Find us at
Fielddays^{NZ} by
downloading
the App


F

DOWNLOAD FOR FREE NOW!

Download on the
App Store

GET IT ON
Google play



- Search for us
- Add us to favourites 
- Get directions to our site

Fielddays^{NZ}
12 - 15 June 2024

THOMAS LED LIGHTS SALE ON NOW!



LIMITED STOCK AVAILABLE!

**GET IN TOUCH WITH THE PARTS DEPARTMENT TODAY!
CALL 07 843 723**



Upper Head Light
\$150.00 + GST
RRP: \$208.00 + GST

SAVE \$58



Fendt Corner Light
\$105.00 + GST
RRP: \$189.32 + GST

SAVE \$84

SET OF FOUR OF EITHER OF THESE



HP5 LED Headlight

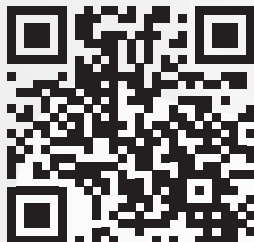
SAVE \$200+

Bundle Deal:
\$870.00 + GST
RRP: \$1083.00+ GST



HP4 LED Headlight

Scan to contact us via our website



WAIKATO TRACTORS



Ultra Narrow Beam
\$150.00 + GST
RRP: \$208.00 + GST

SAVE \$58

ZERO HERO

0 %
**P.A.^
FINANCE
AVAILABLE**



CHECK OUT THE
**MF GLOBAL
SERIES TRACTORS**
AT **FIELDAYS 2024**
SITE H16

ON MF 4700, MF 5700, MF 5700 D & MF 6700 SERIES.

CONTACT US TODAY TO SECURE THIS DEAL!

2 Gallagher Drive, Hamilton

07 843 7237



Waikato Tractors Ltd

38 Progress Drive, Otorohanga

07 873 6221



waikatotracors.ltd

**WAIKATO
TRACTORS** LTD

www.waikatotracors.co.nz

^Finance under chattel mortgage with an interest rate of 0% p.a., 30% cash deposit, the GST component repaid in the 4th month and monthly repayments in arrears over a 36 months term. Available for new retail orders placed before COB 30 June 2024, and installed within two calendar months of arrival, to approved purchasers for business purposes only. Fees, terms & conditions apply. Not available in conjunction with any other offer. Finance provided by AGCO Finance Ltd GST No 88-831-861. Offer available at participating Massey Ferguson Dealers only, while stocks last.

PAGE 5 - WAIKATO TRACTORS AUTUMN 2024

Valtra & Shelbourne: The Perfect Match

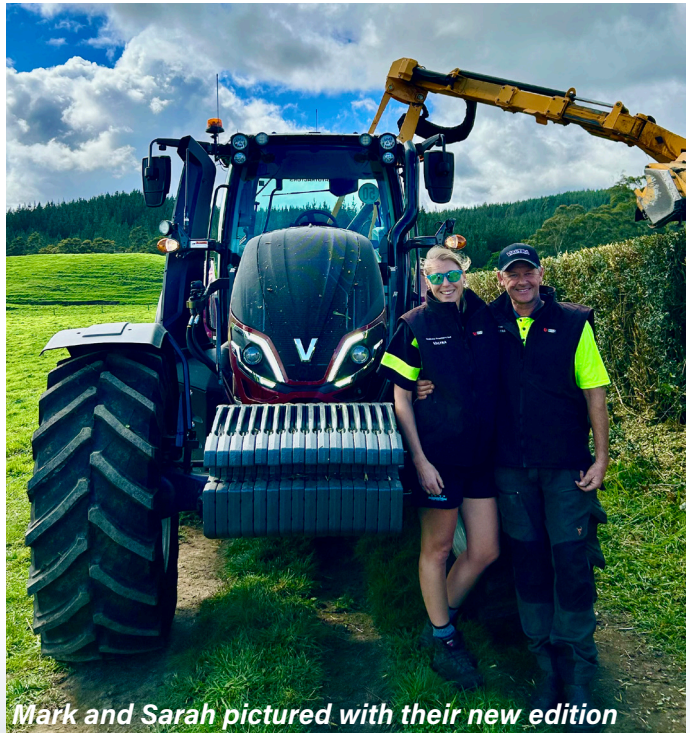
Mark and Sarah Newton recently took ownership of a brand new Valtra T155, which has just clocked 50 hours. We took a drive to Tokoroa to see how they liked their new edition.

The busy couple own and run a dairy farm, Pukeko Place Farms, just south of Tokoroa as well as offering hedge cutting and mulching services to the wider Waikato. The Valtra is dedicated to hedge cutting, so the importance of having a stable, reliable tractor was at the forefront of the couple's minds when choosing their new edition.

When asked why they chose a Valtra, many answers were given, starting with the comfort and ride of the tractor. Mark commented on the cab's quietness, spaciousness, and 'next-level comfort'. The comfort of the tractor is down to its unique air suspension and long wheel-base. For hedge cutting, the tractor's stability and weight were also factors the couple carefully considered. Mark said the strength of the back end and weight of the tractor was next to none, making the Valtra the perfect companion for the job. The 50km gearbox is a bonus, making moving between jobs easy.

The new Valtra is fitted with a Shelbourne Reynolds 8075VFRT. As Mark and Sarah do a lot of roadside mowing, reliability, stability, and reach are the most important factors. The Shelbourne offers that and more. The trimmer was sold new to the couple in 2021 by Ag and Civil. Ag and Civil are a division of Waikato Tractors, who supply agricultural and civil machinery from a range of brands. This is a great bonus for customers as we can offer tractor and machinery packages to suit.

Choosing a tractor is only one element of the process and as the couple said, "a tractor is only as good as the people behind it". Mark and Sarah have built a strong relationship with Neil, one of Waikato Tractors longest-serving sales reps, and while it all starts with the sale, they also emphasised the value of having a strong service team. Waikato Tractors have experienced Parts & Services teams on call 24-7 to assist customers whenever they may need. We also have a dedicated Valtra Service team, headed by Gerard Skinner, who has over 20 years of experience with the brand. Mark and Sarah have already commented on Gerard's extensive knowledge and passion and are stoked to have him on hand.



Mark and Sarah pictured with their new edition

Thank you for your business Mark and Sarah, we hope you continue to enjoy the Valtra & Shelbourne Hedge Trimmer!



SHELBOURNE HEDGE AND VERGE TRIMMERS



**VIEW
THE
RANGE**



Shelbourne 8000 Model



Pukeko Place Farms



Pukeko Place Farms Roadside Mowing

The flagship Shelbourne Reynolds hedge/verge trimmer for professional high-hour users, with telescopic models offering a telescopic of up to 8m and VFRT models with up to 1.6m of rear-wards reach and 2.5m of forward reach.

2 YEAR WARRANTY

MODEL	REACH	SPECIFICATION
8060T	6.0m	TELESCOPIC BOOM (4.8-6.0m)
8070T	7.0m	TELESCOPIC BOOM (5.5-7.0m)
8080T	8.0m	TELESCOPIC BOOM (6.2-8.0m)
8065VFRT	6.5m	VARIABLE FORWARD REACH TELESCOPIC (5.6m-6.5m)
8075VFRT	7.5m	VARIABLE FORWARD REACH TELESCOPIC (6.2-7.5m)

WAIKATO TRACTORS

24/7 Parts and Service

We understand farming is no 9 to 5 which is why we have Parts & Service technicians available 24/7 to be there when you need. Our technicians are experts with many years experience working with Massey Ferguson, Fendt, Valtra, and other well known brands!

*We're behind you
100%*

After Hours Parts: 027 439 7747
After Hours Service: 027 489 8741



MASSEY FERGUSON

VALTRA

FENDT

ISEKI

FIELDMASTER®

• PREMIUM FARM EQUIPMENT •



GMM HD Multi Cut 3 in 1

The preferred choice for mulching work

- 1.76m-3.3m available
 - 10-130 HP
- High quality euro cam clutch pro drive shaft
 - 2 year warranty

\$11,000



Sabre Series

Rotary Slasher/Topper

- Available in 1200 or 1500
- Heavy duty 5mm plate deck
- Clean body lines - no grass build up
 - Offsetable linkage
 - 2 or 3 flail options

\$16,950



GMT Pasture Topper

- 1.8m 3.3m cutting
- Gear driven topper mower
- Front rubber safety guard
 - Friction clutch

\$16,000



Rammer Side Shift

- 300mm, 600mm & 900mm
- Retro fitable to any old post rammer
 - Easily detachable
- Suit most available brands

\$16,000



Post Rammers | Farmer, Fencer, Forte

- We have you covered from a couple to thousands of posts with three models

\$11,000

WAIKATO TRACTORS PT LTD

Talk to us today to find out more!

07 843 7237
www.fieldmaster.co.nz

BRINGING HISTORY BACK TO LIFE



Our very own workshop guru Rodney, shares the story behind this impressive MF 35x. Read his story below.

If you've visited our showroom or stopped by our parts department recently, you will have seen a new addition in the form of a nice, shiny 1963 Massey Ferguson 35x tractor.

This little legend has become a treasured family heirloom for my family as it was owned for many years by my late father-in-law, Wig Wilson, a man known to many, especially around Taupiri and in horse racing circles.

I spent about two and a half years restoring this little gem and have tried to make it as original as possible, from using the Lucas wiring colour codes system, original factory lights and switches to original fitment Goodyear Sure Traction tyres that were sourced from Northern Ireland.

So come in and check it out, it's there for people to see and enjoy, perhaps even reminisce if you are slightly more mature in your years, and to save you from asking, yes, that is a genuine Dual Spool Valve, you won't see many of them around.



Next on the Waikato Tractors Restoration Journey...

We have a Massey Ferguson 532 Mower in the yard ready to be restored, keep an eye out for Updates...This will be epic!

WATCH THIS SPACE!



FEEDER LEADER

THE BOSS II



- ▶ Feeds out from both sides easily and efficiently
- ▶ Distributes hay and silage bales square or round
- ▶ Shorter tray...Bale slops around less
- ▶ Wider holes...Forks feed in with ease!

***Round or Square, we'll be there because...
Our Feeders Lead the WAY!***

CONTACT US TODAY!

2 Gallagher Drive, Hamilton - 07 843 7237
38 Progress Drive, Otorohanga - 07 843 6221

**WAIKATO
TRACTORS**

www.feederleader.co.nz
www.waikatotractors.co.nz

Exploring the Home of VALTRA

Ben Peters, our Valtra Product Specialist has recently returned from Suolahti Finland, where he visited the Northernmost tractor factory in the world, the home of Valtra. Valtra tractors are built tough to withstand the Arctic temperatures which typically drop to -40 degrees Celsius! Farmers in this part of the world use tractors in forestry all winter, which is why Valtra offers reverse drive options to suit a range of forestry and wood chipping equipment. Finland is also home to the AGCO Power (formerly known as Sisu) engine factory. These engines are fitted to all Valtra, Massey Ferguson, and some of the latest Fendt Tractors.

Valtra is a highly innovative company, with many unique features incorporated in their tractors. A great example of this is the SmartTouch screen introduced in 2017. This feature is by far the most user-friendly display on the market. If you use your smartphone, you can navigate the screen without instructions! Valtra is the only power shift tractor on the market to run separate oil reservoirs for hydraulics and transmission. Valtra also fits all their tractors over 135hp with air suspension as standard, offering the smoothest ride comfort of any conventional tractor, bar none!

Valtra also offers the Unlimited Studio which allows full customisation of your tractor, an option taken by 40% of all Valtra buyers. Customers can choose colours, wheel and tyre equipment, extra lighting, and accessories.

Valtra has over 50% market share in its home of Finland and is the market leader in Scandinavia. Market share is growing in both Europe and New Zealand, and we see Valtra as having the most potential for further growth of the Agco brands.

The Valtra brand, formerly known as Valmet has existed since 1951, and was purchased by AGCO in 2004.



The Valtra factory has launched new ranges in recent years, such as the G Series (105-135hp) and Q Series (225-305hp), both of which allow the brand to compete in growing HP segments in New Zealand. Waikato Tractors is one of the most active and best performing Valtra dealers in NZ, and we keep a range of our own stock available for sale.

Waikato Tractors are running several key model Valtra demonstrator tractors and Ben has proven that getting 'bums in seats' has got the Valtra brand growing well in the Waikato. As well as Ben's passion and knowledge in sales, we also have a dedicated Valtra Service Team, headed up by Gerard Skinner. Gerard's unrivalled knowledge of Valtra coupled with over 20 years' experience with the brand means you will be getting the best service possible.

We welcome you to come, meet the team, and take a look at a very attractive new tractor option. You won't regret it!





GRASS PANBUSTER



GROW MORE GRASS



IMPROVED GRASS QUALITY



EXTEND YOUR GROWING SEASON



IMPROVED DRAINAGE

Key Features

- ✓ **Large diameter roller**
- ✓ **Hydraulic Auto Reset Trip Legs**
- ✓ **Up to 450mm working depth**
- ✓ **Hydraulic Depth Control**
- ✓ **Barely leaves a mark in pasture!**

The Panbuster is designed to improve soil aeration and drainage. It helps farmers to grow more grass, extend their growing season and improve grass quality for livestock. Independent tests show that with subsoiling there is an average 21% increase in dry matter across a range of soil types. All machines have hydraulic depth and adjustment on the move, which amongst other innovations, helps the Erth Panbuster really stand out in the market!



BEFORE
SHALLOW ROOTS
COMPACTED SOIL



AFTER
DEEPER ROOTS NEW
ROOT GROWTH

Talk to us today to find out more!

07 843 7237
www.agandcivilmachinery.co.nz





TRACKED FENDT TAKES ON PUKEKOHE SOIL

Agco has been very proactive in providing a demonstrator, the Fendt Vario 940MT dual track crawler tractor into NZ to showcase and offer customers the opportunity to get in the seat and try it out. In the Pukekohe region, we were fortunate enough to have a good window of fine weather to get out to customers in the field to demonstrate the 940MT.

As the onion harvest was in full swing and nearing the end, there was plenty of land to get out and use the 940MT for primary tillage. Once the tractor was set up with the customer's own tillage equipment, we went out with the Fendt team product specialists to run through the features of the machine – from the 9.8 litre 7-cylinder 400HP engine, reversible fan, smart ride system and front idler wheel ballast to the Fendt VarioDrive 40km/hr transmission.



Once the GPS and speed cruise were set, the operators could get a real sense of feel for the tractor and its capabilities. The power to the ground, speed and depth of tillage were impressive. The ride comfort was outstanding due to the Smart Ride system that combines oscillating mid-wheels, hard bar suspension, and cab and seat suspension, giving operators great ride quality without sacrificing the in-field benefits of power, control and traction. The oscillating mid-wheels contour to the ground over terraces and uneven surfaces, providing impressive track-to-ground contact and improving performance and comfort.

The 940MT most definitely had the wow factor, as all of the operators came out with big smiles and were blown away by the performance and comfort. The finish the 940MT left in the field was outstanding, and in most cases, there was no need for a second pass, which saved valuable time and money.

The tractor was well received and, overall, a huge success. It got everyone in the area talking and created a buzz.

Contact your local friendly sales team at The Tractor Centre and Waikato Tractors for more information.



WAIKATO TRACTORS LTD

**WAIKATO
TRACTORS** LTD

Finance Available From

3.49% pa

36 month term



**DEMO MACHINE
AVAILABLE
NOW!**

MORE TECH. MORE POWER. MORE PRODUCTIVITY.

The intelligent engine technology, the industry leading operator's console and record-breaking fuel efficiency put Fendt ahead of the game time after, time. With our heavy hitters known to deliver low cost of ownership and increased productivity, now is the time to take your business to the next level with the best machines for the job!

FENDT

**Talk to your Fendt Product
Specialists Today!**

Hamilton

07 843 7237

Otorohanga

07 873 6221



Waikato Tractors Ltd



waikatotracors.ltd

PAGE 15 - WAIKATO TRACTORS AUTUMN 2024



Massey Ferguson 5709



\$64,900 + GST

Rare to find at only 1225 hrs. 90hp, 100 litre/min hydraulics, very tidy.

Case Puma 240CVT



\$139,900 + GST

Very tidy tractor with new rubber all round. 4700 hours. FL & PTO. Gold spec on 710/60R42.

John Deere 6170R



\$54,900 + GST

Autoquad 50kph, Genuinely really tidy with excellent tyers.

New Holland T7.210



\$89,900 + GST

Powershift 50k, MX loader. Very tidy and workshop checked.

Massey Ferguson 6712S



\$100,000 + GST

Only 1800hrs. Heavy duty 4cyl, 120hp. Selling on behalf with MF (Quickie) loader. Very Tidy.

Fendt 824 S4 Profiplus



\$235,000 + GST

Full Spec incl GPS, two front remotes, 4700 Hours. Selection of 824s available please call.

Deutz Agrofarm 115GS



\$39,990 + GST

3 Remotes, Hi Lo Trans, Creeper. Only 4856 hours.

Claas Arion 650



\$39,900 + GST

Very tidy, FL & PTO

Massey Ferguson 7715 Dyna 6



\$84,500 + GST

4100 hours, 650 tyres, Trailer Brakes. Very tidy tractor.

John Deere 6155M



\$115,750 + GST

Only 4050 hours, trailer brakes, Dromone pickup hitch, cab suspension. Mint tractor. Also one available at 2000 hours

John Deere 1640 with loader



\$15,900 + GST

New Hydraulic Pump and front Axle. Ready to go. Pearson FEL with bucket & fork.

Valtra T151E



\$69,900 + GST

Genuine one owner, 2000hr 2012 tractor. Front linkage. Fresh paint.



Farmgard Heavy Blade



\$12,900 + GST

Bulldozer 820, guide wheel and full hydraulics, done very little.

Duncan Renovator AS 3000



\$49,900 + GST

Airseeder with fert, 5" spacing, opening dics, RSD electric drive. Immaculate drill.

Vaderstad Carrier XL 425



\$89,000 + GST

Mint machine only done about 100ha. Large 625mm discs, leveling boards.

Shelbourne Reynolds Hedge Trimmers



We have your NZ importers, new and used stock available. Call for options.

SAM Spreaders



FROM \$8,900 + GST

Selection of steel and plastic machines. Call to enquire.

Shelbourne Muck Spreaders



The best side discharge machine on the market. Suits the sloppy stuff 100% leak proof. Stock ready to go.

McHale Fusion 3 Plus



\$119,000 + GST

Approx 39,000 bales. Workshop checked. Well respected fixed chamber machine.

Erth Panbuster



NEW STOCK. Break the pan down to 450mm deep and increase to 450mm deep & increase your yields!

Duncan Renovator



\$11,900 + GST

Trailed model.

Kverneland CLC Pro



\$13,900 + GST

1700 hours, FL & PTO. 50kph, 710/60R42 And 600/60R30. Immaculate.

Maschio Rotospike C/W Air Seeder Box



\$15,000 + GST

Rear drawbar, Covering Chain

McHale Fusion 1



\$39,900 + GST

Tidy machine. 63,307 bales. Chains are tight pickup tines, cams and augers tight.



Fendt 927



\$139,000 + GST

Front Linkage 710/70R42. Barely run in at 8000 hours.

New Holland T6070



\$72,900 + GST

Very tidy clean low hour tractor. Never had a loader.

Massey Ferguson 8240



\$29,900 + GST

Goes well.

Massey Ferguson 7720S



\$199,000+ GST

Dyna6, 2021, 1610 hours. 50kph, FL&PTO, 600/60 R30 & 710/70 R42 tyres.

New Holland 570 Baler



\$19,500 + GST

Fully checked and reconditioned, this is a baler that will go out straight to work.

Aitchison Moore Uni Drill



\$12,900 + GST

Direct Disc Drill, working order

Horsch Pronto 6M Drill

Zero % Finance/36months*



Reduced price to \$145,000 + GST

2020, Seed and Fert, Very Tidy.

Gaspardo Gigante Pressure 4M

Zero % Finance/36months*



\$85,000 + GST

Only 1048ha, Seed & Fert, full spec late model Pressure version.

McHale HS2000



\$13,000 + GST

Being sold OBO. 2004, Bale Tipper. Bale count 80,900.

Pottinger Rake Eurotop 771a



\$15,000 + GST

Selling on OBO 2008, Marsh Rings. Quite straight and tidy.

Hustler Chainless 2000



\$3,900 + GST

2017 MORENI KRONOS 3000



\$18,900 + GST

ORTHMAN SOILMOVER FX775



- X Hire Machine
- Save \$30k on new model

\$52,500 + GST

GLOBAL 12 TONNE TRAILER



- Only 2 In Stock!

\$29,990 + GST

FLEMING ST2300



- X Hire Machine
- Save big over new
- Sprung draw-bar

\$47,990 + GST

FLEMING TR8



- Usually \$25,550 + GST
- Only 2 In Stock

\$22,900 + GST

FLEMING TR6



- Only 3 in stock

\$16,000 + GST

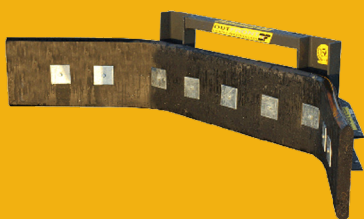
FLEMING BALE TRAILER - TRF21



- Shop Soiled
- Must go!

\$16,900 + GST

FLEMING YARD SCRAPER



- Only 1 in stock
- Euro hitch

\$3,000 + GST

**GET IN TOUCH
TODAY!**



07 843 7237

www.agandcivilmachinery.co.nz

**WAIKATO
TRACTORS**



We're behind you
100%

HAMILTON | 2 GALLAGHER DRIVE | 07 843 7237

OTOROHANGA | 38 PROGRESS DRIVE | 07 873 6221

www.waikatotractors.co.nz

